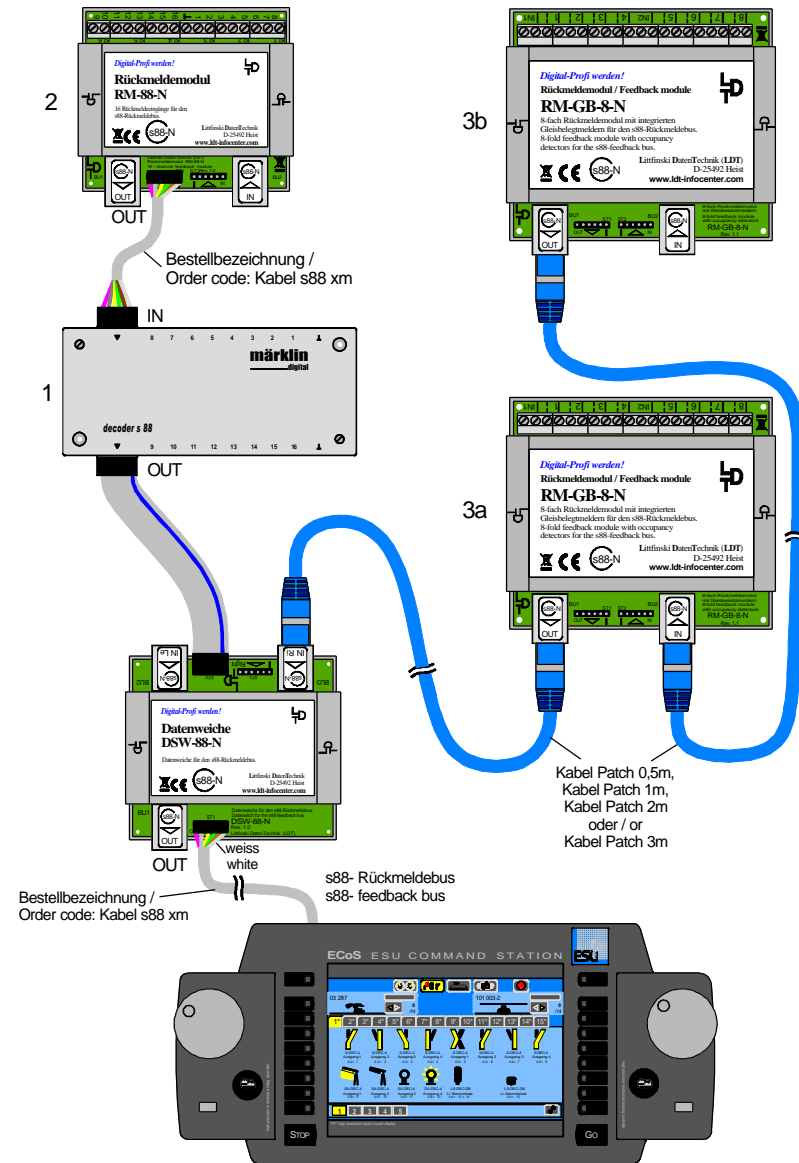


# Datenweiche DSW-88-N an ECoS 2 (50 200) (verschiedene Rückmeldemodule)

## Data switch DSW-88-N on ECoS 2 (50 200) (various feedback modules)



Technische Änderungen und Irrtum vorbehalten.  
 Subject to technical changes and errors.  
 © 12/2011 by LDT

